

M.O.L.E.® EV

Display Replace Instructions | A61-3806-83 | Rev-2.1

ECD | 4287-B S.E. International Way, Milwaukie, Oregon 97222-8825



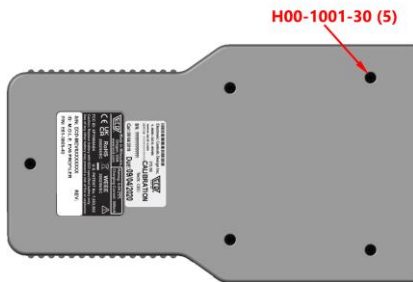
©2025 ECD

THIS DRAWING OR DOCUMENT IS THE PROPERTY OF ECD. AND EMBODIES CONFIDENTIAL PROPRIETARY DESIGN OR DATA IN WHICH ECD RETAINS ALL PATENT AND OTHER RIGHTS INCLUDING EXCLUSIVE RIGHTS OF USE, MANUFACTURE OR SALE. IT IS SUBMITTED UNDER A CONFIDENTIAL RELATIONSHIP FOR A SPECIFIC PURPOSE AND THE RECIPIENT AGREES BY ACCEPTING THIS DRAWING OR DOCUMENT NOT TO SUPPLY OR DISCLOSE ANY INFORMATION REGARDING IT TO ANY OTHER PARTY OR TO USE IT FOR ANY OTHER PURPOSE THAN THE SPECIFIC PURPOSE FOR WHICH SUBMITTED

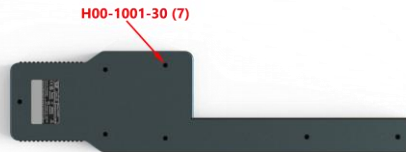
ALL COMPONENTS, MATERIALS AND MANUFACTURING PRACTICES MUST MEET THE CURRENT RESTRICTION OF THE USE OF CERTAIN HAZARDOUS SUBSTANCES IN ELECTRICAL AND ELECTRONIC EQUIPMENT (ROHS) DIRECTIVE OF THE EUROPEAN PARLIAMENT

## STEP 1 - BATTERY REMOVAL

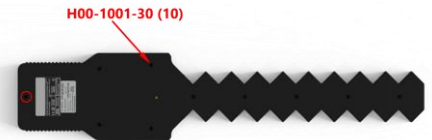
- 1) Remove the bottom and top cover using a Phillips screw driver to loosen the 2-56 x 3/16 screws (ECD Item: H00-1003-10).



M.O.L.E.® EV6



M.O.L.E.® EV12



M.O.L.E.® EV20

- 2) Carefully turn the M.O.L.E. Thermal Profiler over and remove the top cover.



Be careful not to pull too hard as the overlay label may stick to the display.



M.O.L.E.® EV6



M.O.L.E.® EV12



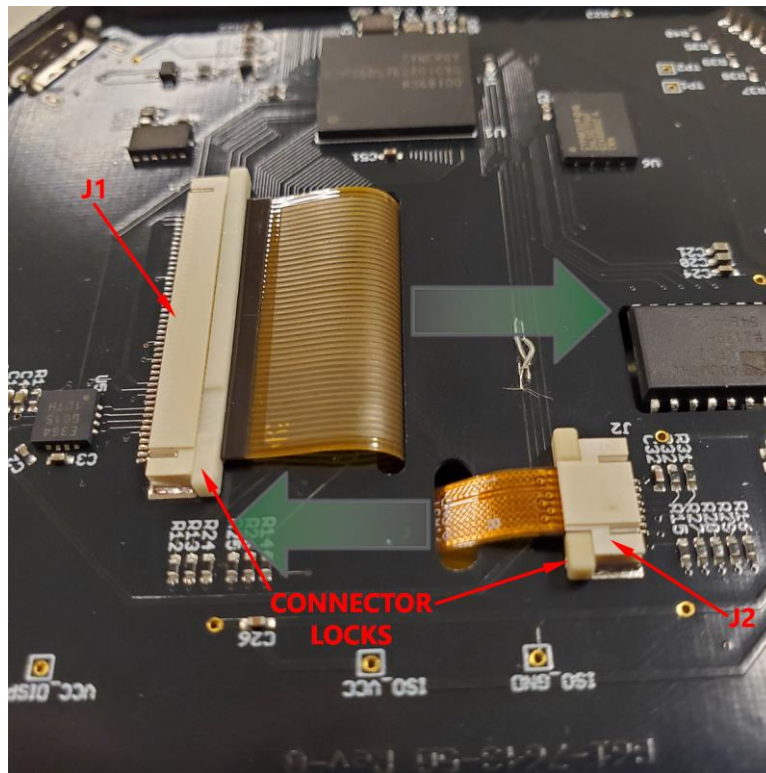
M.O.L.E.® EV20

3) Disconnect the battery (ECD ITEM: F30-0060-00).

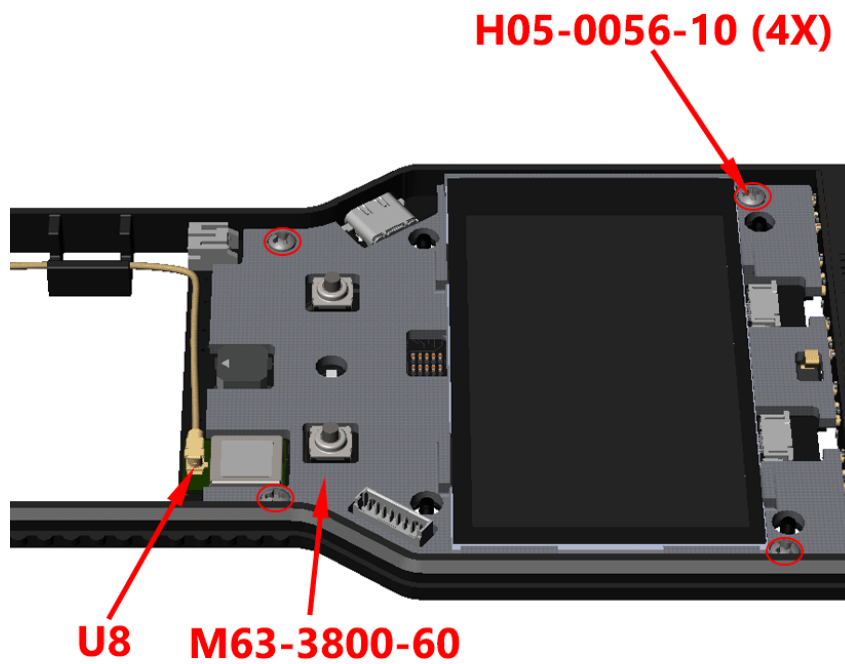


## STEP 2 - DISPLAY REPLACEMENT

- 1) From the bottom side, carefully open the locks on the J1 & J2 connectors on the main pcb assembly by pressing them away from the connector housing.



- 2) From the top side, remove the Display (ECD Item: Y25-0031-00) and Main board display support (ECD Item: M61-3806-60) by loosening the 2 X 3/16 screws (ECD Item: H05-0056-00).

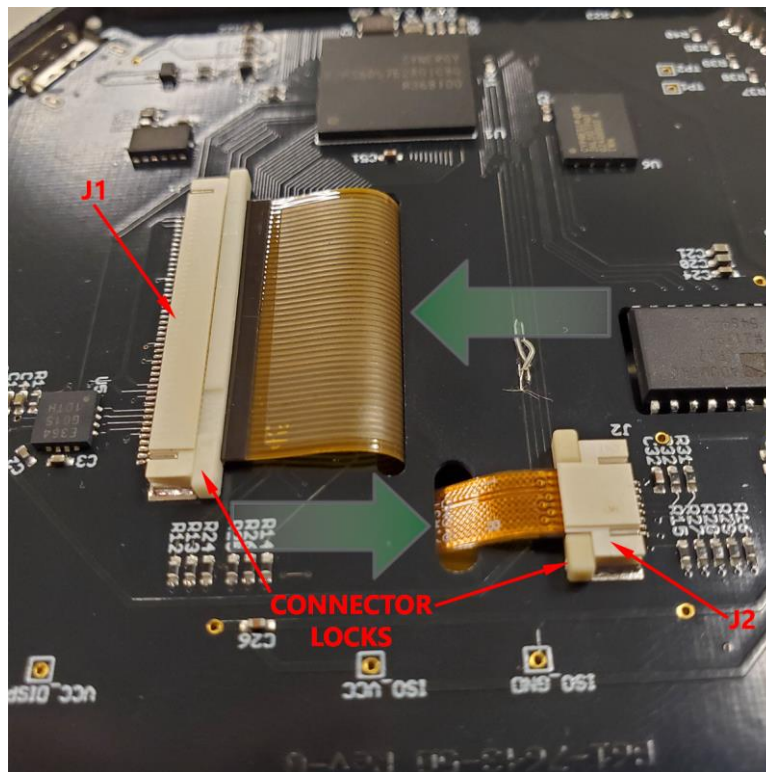


3) Connect the display and support to the Main PCB assembly.

- ✓ Make sure the locks on the J1 & J2 connectors on the bottom side of the Main PCB assembly are open. If not carefully open by pressing them away from the connector housing.
- ✓ From the top side, insert the 8 position flex interface cable through the small through slot in the Main PCB assembly and the 45 position flex interface cable through the large through slot.
- ✓ Carefully flip the assembly over and gently bend the 8 position flex interface cable toward connector J2 and the 45 position flex interface cable toward the J1 connector.
- ✓ Carefully insert the 8 position flex interface cable into J2 connector and the 45 position flex interface cable until they are fully seated.
- ✓ Keeping slight pressure on the flex cable, slide the lock of the J2 connectors back in place by carefully pressing it toward the connector housing. repeat for the J1 connector.



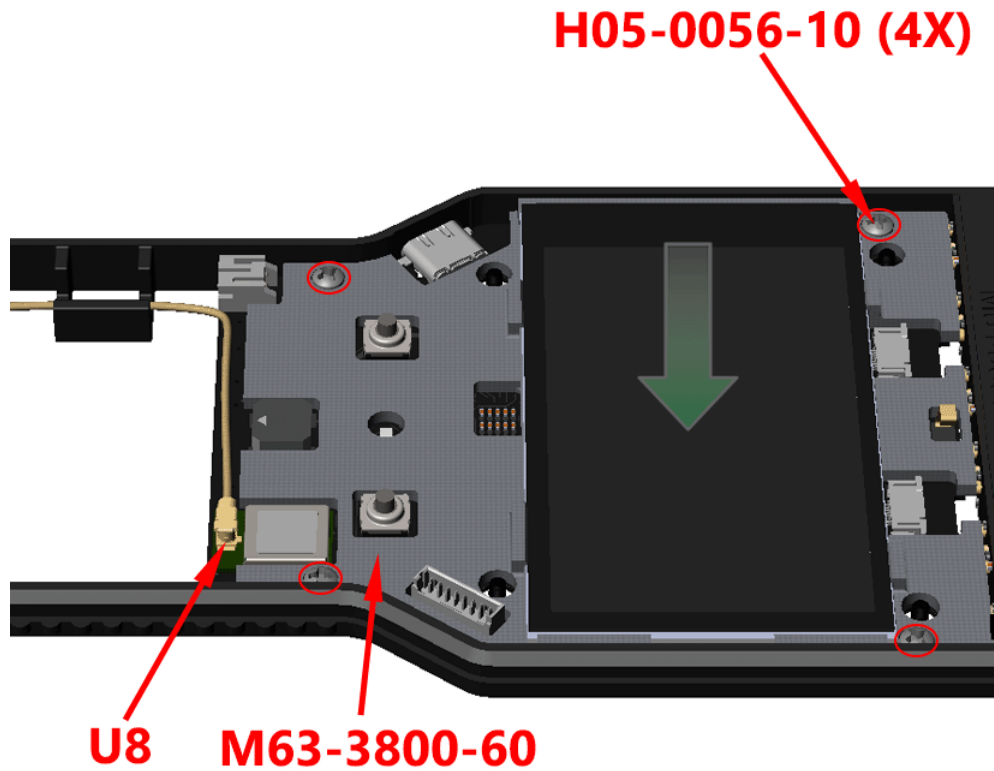
To help determine if the flex cables are fully seated, each has a white stripe that will no longer be seen if they are in place.



- 4) Secure the Main PCB assembly and Main board display support to the frame supports the with four screws, 2 x 3/16.



Snug the screws in place as damage can occur to the frame supports if they are over tightened.





### STEP 3 - BATTERY INSTALLATION

- 1) Connect the Battery connector into the J5 connector on the Main PCB assembly. Coil excess wire and in the Frame support.

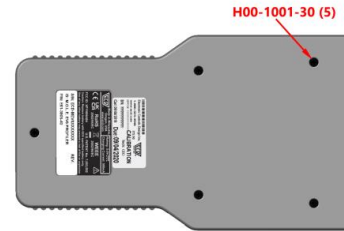


- 2) Confirm the Display is working.
  - ✓ Press and hold the ON/OFF button.
  - ✓ If the Display does not work please contact ECD Support.

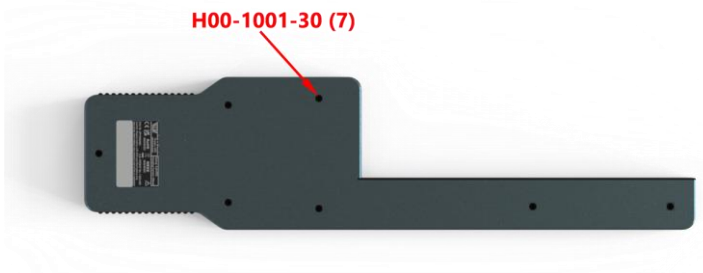


3) Secure the Top and Bottom covers to the Frame.

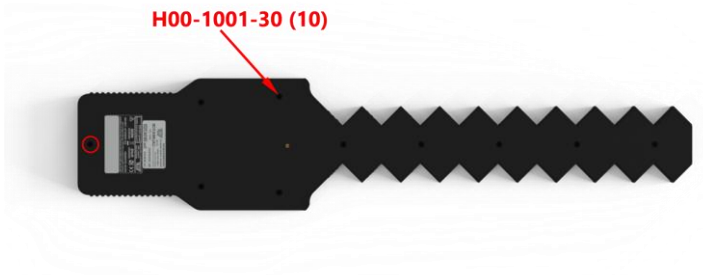
- ✓ Insert the Frame in the Bottom cover.
- ✓ Remove the clear protective liner from the Display. With a dust-free cloth, clean the Display to remove any finger prints/smudges and debris.
- ✓ Confirm the Display is properly seated in the Support and the Battery wires are within the Frame support.
- ✓ Place the Top cover on the Frame and secure the covers to the Frame with the 2-56 x 3/16 screws.



M.O.L.E.® EV6



M.O.L.E.® EV12



M.O.L.E.® EV20